

RU is a platform that values community above all, so let's support and engage with these amazing artists from different parts of the world whose practices highlight topics of relevance.

See you soon!

The RU Team

---

## RU Exhibition: Reimagining Naturescapes



**Participating artists:** [Haoua Habrè](#), [Peter Kašpar](#), [Nicholas Milkovich](#), [Catarina Real](#), [Gema Rupérez](#), [Eda Şarman](#), [Adam Vačkář](#), [Talita Zaragoza](#)

**Location: Residency Unlimited**

**360 Court Street (main green church doors), Brooklyn NY 11231 ([map](#))**

**On view: Nov 15 - Nov 17 and Nov 20 | 11am - 6pm**

**Opening reception: Wednesday Nov 15, 2023 | 5 - 8pm (Please RSVP)**

**Friday Nov 17, 2 - 4pm | Catarina Real and Peter Kašpar present "Friday", a happening**

RSVP

**Reimagining Naturescapes** brings together works developed by 8 artists over the course of their residencies New York with [Haoua Habré](#), [Peter Kašpar](#), [Nicholas Milkovich](#), [Catarina Real](#), [Gema Rupérez](#), [Eda Şarman](#), [Adam Vačkář](#), [Talita Zaragoza](#).

**Fragments of Self** was realized by [Haoua Habré](#) (Senegal-France) in her studio at Artists Alliance. Here the artist experiments with the idea of expanding the vision of the human body by giving it more than a physical function.

**This Line Serves...** is a site-specific piece by [Nicholas Milkovich](#) (USA), realized by the artist in the RU space. Integrating rapid precision and patient craftsmanship, Milkovich merges synthetic laser-cut acrylic sheets with meticulously weaved, wrapped, and sewed shreds of his own clothing that he sews together manually.

**Espacio Personal (Personal Space)** is a video work by [Gema Rupérez](#) (Spain) reflecting upon the tension between subjects and their (in)capacity to establish a real and advantageous dialogue with each other.

[Eda Şarman](#) (Turkey-USA) researches innovative ways to look at nature in response to our changing environment. The clay sculpture "**I hear bubbling, see rippling, a work in progress**" - mirrors the artist's explorations on tides and landscapes which she considers temporal rather than places of stability.

**Heracles of Hogweed** is a video by [Adam Vačkář](#), (Czech Republic) that delves into the complexities of human interaction with Giant Hogweed, an invasive plant originating from the Caucasus. Challenging the traditional perspective on migrating plants and the narrow human approach to these organisms, the film traces the plant's migration from Central Asia to Europe and the Americas.

[Talita Zaragoza](#) (Brazil-USA) presents "**Sleepy Mountain XXIX**", a large work on linen likened by the artist to an expansion of the landscape genre. In an attempt to

reorganize and recategorize shapes, forms and lines, Zaragoza fabricates map-like landscapes.

**Friday**, a happening by **Peter Kašpar** (Slovakia) and **Catarina Real** (Portugal) is a collaborative effort sparked by a mutual interest in social practice which they both actively pursue in their home countries. It will take place on Friday, November 17 from 2:00 to 4:00 PM, with the starting point being RU.

## LEARN MORE



---

**Open Studio: Recent works by José Manuel Mesías**



*Playing card found at Villegas and Obrapía, June 30th 2023 - Documentation of found objects from the series Itineraries*

**Friday November 17, 2023 | 5:00 - 8:00pm**

**Location: Cuban Artists Fund studio, 208 E 51st St, New York, NY**

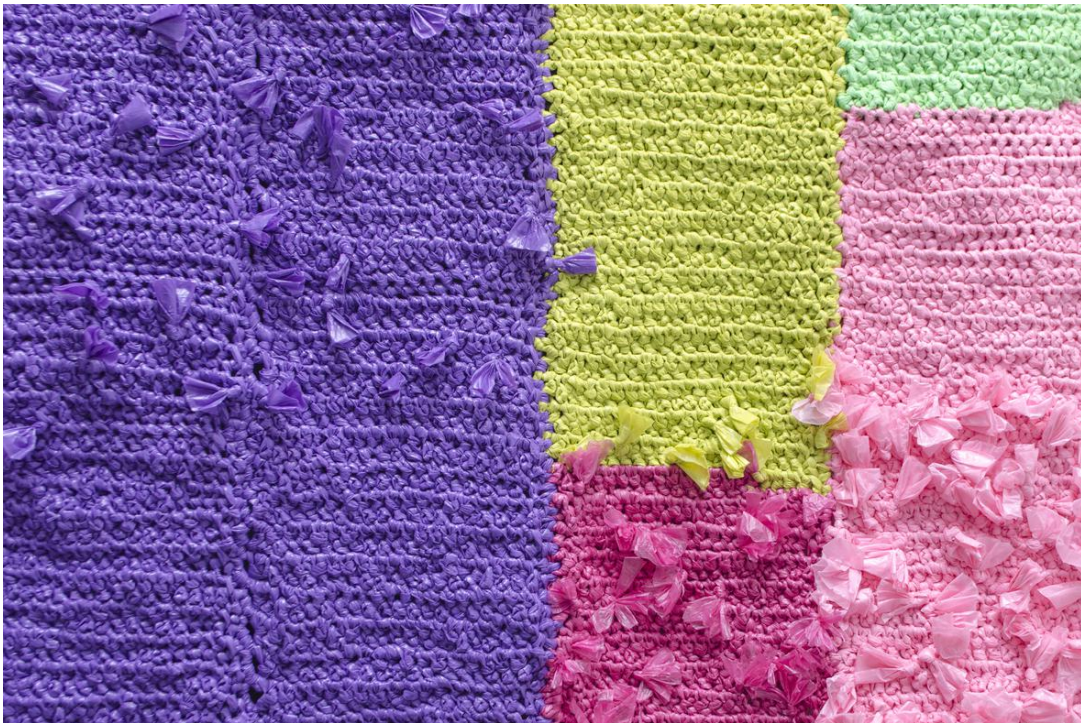
**RSVP**

Please join the Cuban artist **José Manuel Mesías** at an open studio event realized at the occasion of his residency in New York. Visitors will be exposed to new works as part of Mesías' ongoing series Mind species, broadly defined by the artist as a quest around the idea of art as a means of exploring the unknown. This is an invitation for viewers to create meaning out of psychologically charged works, comprised of silent and mysterious paintings, as well as found and fabricated small textural objects by Mesías drawing inspiration from the decaying beauty and deterioration of the urban environment.

**LEARN MORE**

---

## RU Talk: Living with toxicity—A show and tell with Jelena Micić and Heather Davis



*"Heart is on the left" (detail). From the series "Plastik ist plastisch". 2021/2022. Garbage bags. ~ 80 x 80 cm (5,295m3) ©Jelena Micić*

**Wednesday November 22, 2023 | 6:00pm**

**Location: Residency Unlimited**

**360 Court Street (main green church doors), Brooklyn NY 11231 ([map](#))**

In addition to taking place in-person at RU, this program will be streamed online via Zoom at [this link](#).

[Register Here](#)

Living with toxicity is non-consensual. From plastic packaging, to cleaning agents, color catcher papers to industrial waste. The practice of accumulation and structuring of the ambivalent material reveals the ways in which one is (un)willingly involved. The exchange between [Heather Davis](#) and [Jelena Micić](#) will be presented in the form of a work and process demonstration, tracing material politics, revealing industrial patterns, generational relations with specific material and techniques, as well as the underlying migrant labor conditions maintaining oppressive infrastructures.

Works by [Jelena Micić](#) will also be on view at this occasion.

[LEARN MORE](#)



---

## Meet Over Lunch: A presentation by Martina Bábinová



*View of the exhibition: Žofia Dubová - Somewhere Between Place and Painting, 2023, ©Ernest Zmeták Art Gallery*

**Monday November 27, 2023 | 1:00 - 2:00pm**

**Location: Residency Unlimited**

**360 Court Street (main green church doors), Brooklyn NY 11231 ([map](#))**

**In addition to taking place in-person at RU, this program will be streamed online via Zoom at [this link](#).**

**Register Here**

**Martina Bábinová** is a Slovak curator currently in residency at RU. During her presentation, the audience will find out about her activities at the **Ernest Zmeták Art Gallery in Nové Zámky**, where she currently works as a curator of contemporary art and gallery educator. Martina will introduce the gallery's focus, concept, and vision. These attributes define the gallery's identity and contribute to its role as a cultural institution within the Slovak art scene.

**LEARN MORE**



---

**RU Talk: Shaping an Art Odyssey—from Concept to Continent**



*Michelle Levy, "She is alone", 2017. Performance lecture with participation presented by NurtureArt, Brooklyn. Photograph courtesy of NurtureArt*

**Thursday November 30, 2023 | 6:30 - 8:00pm**

**Location: Residency Unlimited**

**360 Court Street (main green church doors), Brooklyn NY 11231 ([map](#))**

**In addition to taking place in-person at RU, this program will be streamed online via Zoom at [this link](#).**

**Register Here**

Join **Michelle Levy** in conversation with RU Executive Director **Nathalie Anglès** and curator **Bartek Remisko** for an evening that uses the **PAULINA** project as a case study to explore how independent artists can develop, pursue, be responsive to, and sustain ambitious, large-scale projects.

Prompted by the discovery of one woman's striking Holocaust story that came into Levy's care, Levy cultivated a web of partnerships in Poland to conduct research and public engagement to explore this story through a contemporary lens, raising funds as she went along. The result is PAULINA, an evolving performance work shaped by twists and turns of events, accidental meetings, and unexpected discoveries.



## LEARN MORE



Beach64retreat



Council on the Arts



[Donate to RU](#)

Donate to Residency Unlimited (RU) and support the exchange of art and ideas through local, national, and international residencies and year-round public programs. Thank you!

Follow RU on [Facebook](#), [Instagram](#) and [Twitter](#) for updates, opportunities, RU Community news, and resources @residencyunlimited.

© 2009 - 2023 Residency Unlimited | 360 Court Street unit #4, Brooklyn NY 11231

[Web Version](#)

[Preferences](#)

[Forward](#)

[Unsubscribe](#)

Powered by **Mad Mimi**®

A GoDaddy® company