

## ***RU Programs at Governors Island Jose Taborda and Yifat Bezalel***

June 11th, 2023 | 11am - 5pm



**KODA / RU House**

**Governors Island, Colonels Row, Building #404B, first floor**

These programs benefit from support from the Luso-American Development Foundation (FLAD), the New York City Department of Cultural Affairs in partnership with the city council, and Artis.

## ***Duty of the Hearts: A projected drawing and love letter by Yifat Bezalel***



Yifat Bezalel's concept of "Shekhinah" is a central theme that often weaves through her artwork. Derived from Hebrew mysticism and Jewish theology, the shekhinah (שכינה) denotes the dwelling or settling of the presence of the divine and feminine. Yifat explores this concept as a symbol of spiritual connection, inner strength, and the embodiment of divine energy. Her interpretation of Shekhinah goes beyond religious boundaries, transcending cultural and spiritual contexts. It serves as a reminder of the universal human experience and the potential for divine connection that resides within each individual, regardless of their beliefs or backgrounds.

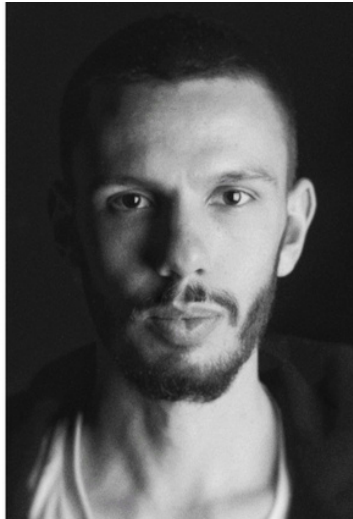
## ***Faster and Faster by Jose Taborda***



FASTER AND FASTER consists of a selection of recent works developed and materialized during José Taborda's residency at Residency Unlimited. All the works seek to challenge existing fundamental notions of life by providing impossible new versions of common interactions. Specifically for his solo show at Governors Island, Taborda will make use of the very unique characteristics of the exhibition space by re-imagining household imagery into an anthropological defying experience that bridges 25,000 years ago to the present.



**Yifat Bezalel** is trained as a classical and academic artist, and over the years she has established her unique technique. In her work process she superimposes semi transparent pencil layers of figurative and realistic images creating surreal realms. Her works have often been described as having an ethereal quality to them. Works by Bezalel ask for a different kind of attention—slower and more reflective. They come from previous or other worlds where the image had the power of revelation or prophecy. Bezalel's motifs belong to the long history of art, from the Renaissance to Francisco Goya, René Magritte, to Gerhard Richter. Most of these references operate below the threshold of consciousness, but precisely because of this they trigger and renew the power of the past in the present. The image slowly reveals and unfolds itself on the paper, it rises from the white void, curls and folds. It is first and foremost a record of time and of movement, and only then does it evolve to become an idea or a story.



**José Taborda** explores the reliability and malleability of perception, cognition and memory through multidisciplinary media. He utilizes immersive or interactive installations to expand preconceived notions about the sensorial system. Through constant research and experimentation with different fields such as mechanics, optics, sound, neuroscience and biology, Taborda is able to materialize his works with a wide-range of technical and material solutions with fewer physical restraints. Taborda participated in the 71st edition of Jeune Création at Fondation Fiminco (Paris); FUSO International Videoart Festival at MAAT Museum (Lisbon); New Beginnings, VOGUE Magazine; WIMBA, Steneby Konsthall (Sweden), etc. The artist also took part in multiple projects such as Bienal da Maia (Maia); MINA at the National Museum of Natural History and Science; Bauhaus 100th Anniversary edition (Berlin and Weimar); Paralaxe Observatorio (Porto); Gerador Festival among others.