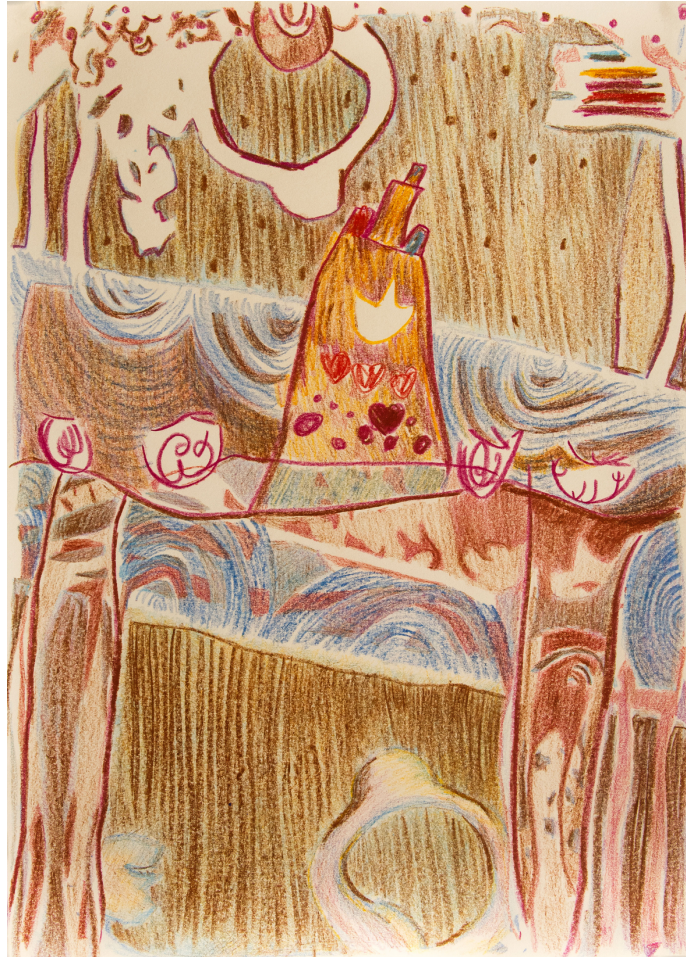


Join us today from 5-8pm for the opening of the group show **In Residency at RU** at the **Chashama** gallery space uptown featuring current resident artists **David Almeida**, **Teo Betin**, **Eva Giolo**, **Wawrzyniec Gucewicz**, **Sandra Eula Lee**, **Tobias Nussbaumer**, **Dominique Uldry** and **Johannes Willi**. On view till June 11! More info [here](#).

On June 1, there will be a pop-up exhibition at RU with new work by **Atalya Laufer** followed by a discussion between the artist and curator **Ayelet Danielle Aldouby**.

RU Exhibition: Between the MA and the Lines



Atalya Laufer, "Unicorn cake and Pesto pasta", 29, 7 x 42 cm, colour pencil on paper.

Wednesday June 1, 2022

Pop-up exhibition at RU | 12:00 - 6:00pm

Discussion | 6:30 - 8:00pm

Residency Unlimited

360 Court Street (main green church doors), Brooklyn NY 11231

**Proof of vaccination and face covering required indoors during the event*

To attend the discussion online via Zoom, please click on [this link](#) at the time of the event.

Register Here

The Japanese concept of Ma refers to the in-between spaces. It could be a physical or emotional space between people, the compositional distance between elements,

an interval, an emptiness, or a pause in time.

Between the MA and the Lines is a dialogical conversation between **Atalya Laufer**, a Berlin based multi-disciplinary artist currently in residency at RU and the Guest curator **Ayelet Danielle Aldouby**. Their exchange will focus on Laufer's recent works on paper, on view in the space. They take as their point of departure drawings made by her four year old daughter which the artist then redraws and collages. Appropriation is integral to Laufer's practice. An intergenerational and interpersonal dialogue is at times humorous or even absurd but always humane. Much of her work has been about conversing and reinventing works by artists and writers who are no longer living or far removed. However in this series she translates the drawings by her daughter almost as quickly as they were executed.

By its mere presence, the audience will engage with the artist in the elaboration of this body of work.



RU Community News



*Katie Hubbell, The Tastebud I
Swallowed, 2021, Video
Installation*

NARS 2022 Spring Open Studios

201 46th Street, Brooklyn, NY 11220

Friday June 3, 6-9 pm

Saturday June 4, 1-5 pm

Come meet the Kentucky-based 2022 RU artists **Lindsey Whittle** (Sparklezilla) and **Anissa Lewis** in their studios at NARS. This two-day exhibition invites the public to meet over 50 artists from all over the world.



The 'Broken English' Podcast by 2022 RU artist Mila Panic

This podcast explores notions of speech and language, what it means to be 'broken', how should we 'correct' ourselves, notions of translation, second language, native languages, dog-whistle politics, and class-related aspects of language and writing/proofreading. In this **5th episode**, Mila Panic interviews another RU artist, namely **Ibtisam Tasnim Zaman**, a Black Lesbian American Multidisciplinary intersectional feminist artist who works as an artist and linguistic interpreter in NY.

Would you like to suggest a guest or topic, or provide feedback? If so, write to podcast.brokenenglish@gmail.com / [@brokenenglish_podcast](https://twitter.com/brokenenglish_podcast)

Available on: [Spotify](#), [Apple Podcasts](#), [Listen Notes](#), [Podcast Index](#)



Sheida Soleimani, Dukhan Field, "Qatar", 2018. Courtesy the artist and Denny Dimin Gallery

in/stasis at Artists Space

11 Cortland Alley, New York, NY 10013

On view until May 29, 2022

Farideh Sakhaeifar (2017 RU alum) is part of the annual spring exhibition of the Whitney's **Independent Study Program** alongside Natalie Ball, Meriem Bennani & Orian Barki, Carolina Caycedo, LaToya Ruby Frazier, Emily Jacir, Tomashi Jackson, Nadia Myre, Otobong Nkanga, Cameron Rowland, Sheida Soleimani, and Betty Yu.

Curated by Daría Sól Andrews, Sally Eaves Hughes, Klaudia Ofwona Draber, 2021–22 Helena Rubinstein Curatorial Fellows of the Independent Study Program.



Kosuke Kawahara, "Into the Night, 2018-2021", Oil color, spray paint, pencil, beeswax, animal glue, paper on found fabric canvas 29 7/8 x 25 in / 75.9 x 63.5 cm

Kosuke Kawahara: Into Ultrablack at RAINRAIN Gallery

Online exhibition

On view until June 19, 2022

Rain Lu (2019 Curatorial alum), founder of **RAINRAIN Gallery**, presents a solo show by Kosuke Kawahara, a Brooklyn-based artist whose works look at growth, decay, perception, spiritualism, interdependent relationships, and human behavior in ever-shifting environmental conditions.

Opportunities

MOZAIK Philanthropy 2022 Future Art Awards: The Digital Awakening

Deadline: July 8, 2022

Open call to U.S. artists, including aspiring, emerging and established NFT artists for all art Mediums/Platforms/Marketplaces/Cryptocurrencies. MOZAIK recognizes that artists will have a profound impact on the shaping of important ideas, values and themes in the crypto-art space, propelling the future trajectory of the NFT art ecosystem. Winners will each receive between \$2,500 and \$5,000 and showcase artworks in a curated virtual exhibition in Fall 2022.

[Donate to RU](#)

Donate to Residency Unlimited (RU) and support the exchange of art and ideas through local, national, and international residencies and year-round public programs. Thank you!

Follow RU on [Facebook](#), [Instagram](#) and [Twitter](#) for updates, opportunities, RU Community news, and resources @residencyunlimited.

© 2009 - 2022 Residency Unlimited | 360 Court Street unit #4, Brooklyn NY 11231

[Web Version](#)

[Preferences](#)

[Forward](#)

[Unsubscribe](#)

Powered by [Mad Mimi®](#)
A GoDaddy® company