

# Summer 2021 RU Artists-in-Residence Group Show

**Exhibition Dates:** July 22 - July 24, 2021

**Location:** Residency Unlimited, 360 Court Street (main green church doors), Brooklyn NY 11231

**Exhibition Opening:** Thursday, July 22, 4:00pm - 8:00 pm

**Viewing Hours:** Friday July 23 - Saturday July 24, 2:00 pm - 7:00 pm

Residency Unlimited (RU) is pleased to present a pop-up **Summer 2021 RU Artists-in Residence Group show** opening on July 22 in the church space highlighting new works by five US-based and international artists realized during their residency in New York.

The *Unburrow* component of this exhibition is curated by [Audrée Anid](#) (RU guest curator). It features realizations by the Kentucky-based artists [Sandra Charles](#), [Kristina Arnold](#) and [Michelle Burdine](#). In her description of their works, Audrée Anid notes how these three women artists “explore the dynamics of social systems, and through their artistic output they push against prescribed pressures, drawing the viewer into their constructed narratives. Through various visual manifestations all three artists uncover what is otherwise unseen and often, unspoken. In this exhibition, richly detailed and symbolic portraits remove the veil between subject and viewer, unearthing the essence of the women depicted; topographical drawings seem to reveal both an interior landscape of the body and an exteriorized space; and a personal journey of womanhood and reckoning is rendered visible through photographs and an invitation to engage with an artist-made book.”

In this group show, other societal facets are revealed by the international artists [Judit Kis](#) and [Shotiko Aptsiauri](#). With *Surrender*, Budapest-based artist Judit Kis presents an installation of video works and brick sculptures that is deeply inspired by her recent trip to Mexico. In her text about the artist, the curator Chelsea Pierce outlines how “in using her own body and subjectivity as a tool within her confessional art practice, Judit Kis establishes intimacy between herself and the viewer to instill an emotional impression. Focused on self-care and healing, she has recently explored Indigenous uses of plant medicines in ritual and 1950s psychiatric experiments with psychedelics to work through trauma. Creating her own sensory spaces, both virtual and physical, she explores the boundaries of conscious and subconscious existence.”

Known for his monumental site-specific and multimedia installations in the public space (at times occupied unauthorized architectural spaces), the Georgian artist Shotiko Aptsiauri leads poetic explorations in our mental, physical and collective spaces. Time and contexts are his preferred working mediums as reflected in the floor piece *AI STRIPPERS AND ARTIFICIAL HOMES* realized in his studio at Artists Alliance with plaster, epoxy and textile. In his own words, the visual language he develops is “generated through personal urgency which needs to see the light.”

## Installation images and opening



**RU Intern Suha Cho** welcoming guests



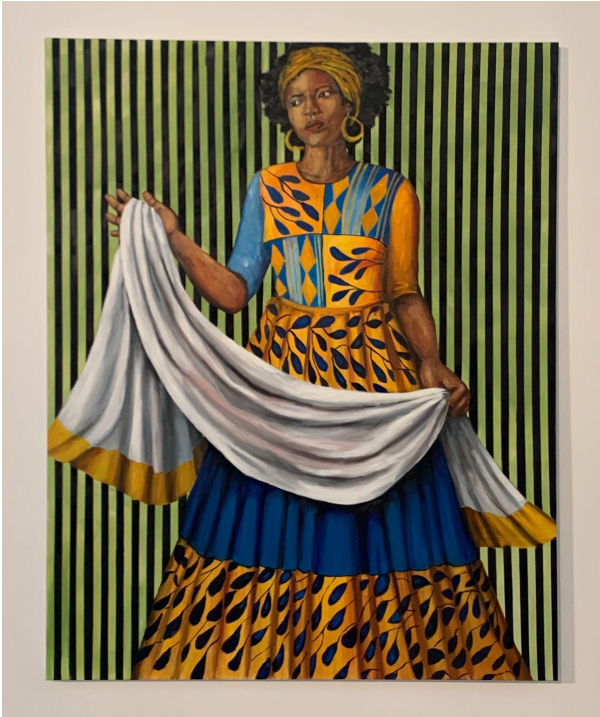
**Shotiko Aptsiauri, *AI STRIPPERS AND ARTIFICIAL HOMES*, Plaster, Epoxy and Textile, 2.5 x 1.5 m, 2021**



**Judit Kis, *Surrender*, Installation bricks, rocks aluminium and video 2021**



**Sandra Charles, *Untitled* and *Truth's Legacy*, Oil on canvas, 60 x 48 inches, 2021**



**Michelle Burdine**

*My Body Bleeds. I Do Not Apologize*, Color photograph on archival pigment print from scan, 5' x 5'. 2021



**Michelle Burdine**

*Suspended / and time passed*, Paper, indigo dye, menstrual blood, color photographs on archival pigment prints, typewriter ink, cherry wood, metal, H 32" X L 25" X W 20", 2021





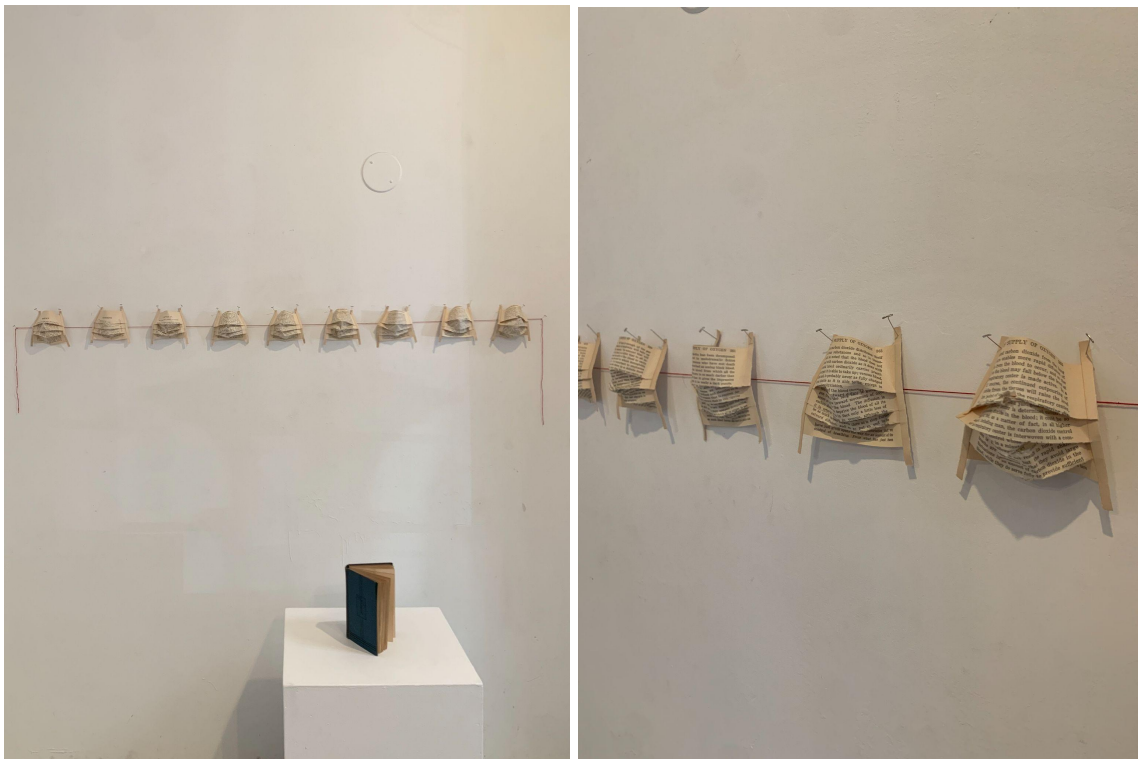
**Kristina Arnold**

*Field Work*, Ink, watercolor, gouache, tinted gesso and graphite on mylar and paper, 73" H x 108" W, 2021



**Kristina Arnold**, *Making / Unmaking / Remaking: Popular Science*, Found book, embroidery thread, t-pins

Dimensions variable, 2021









## Supporters:

This exhibition benefits from the support of the Great Meadows Foundation, the Trust for Mutual Understanding, and the Window Project. In addition, this exhibition is supported, in part, by public funds from the New York City Department of Cultural Affairs in partnership with the city council.

