

Like

Tweet

Pin

+1

in

**RU**  
RESIDENCY UNLIMITED

**NOV 2015  
NEWSLETTER**



**Do you use our free online service RU Opportunities to research residencies worldwide? 22 days left to support our [Kickstarter Campaign](#) !!**

Interested in the [RU/Visual AIDS 2016 curatorial residency](#) that explores the intersection of visual art and HIV/AIDS? The deadline for the open call is Nov 15. The finalist will be offered a one-month residency next March in New York City all expenses covered.

In November we are pleased to welcome in our residency program the curators [Tijana Miskovic](#) (Denmark) and [Anne-Marie Saint-Jean Aubre](#) (Canada), as well as NY based artist [Gabriela Albergaria](#).



Ivan Gaete at the Ace Hotel on Nov 1

This month, there are many RU related events happening:

-- Ace Hotel is inviting five RU artists to participate in its [Artists in Residence](#) series with [Ivan Gaete](#), [Beto Shwafaty](#), [David Helbich](#), [Christiaan Bastiaans](#), and [Manuela Viera-Gallo](#). Check out Gaete's experience on [Tumblr](#)!

-- Nov 9, [David Helbich](#) performs *No Music – 'Ohrstücke'*, a performative rehearsal at UnionDocs.

-- [Tijana Miskovic](#) in collaboration with [COPENHAGEN ULTRA CONTEMPORARY BIENNALE](#) and [Clocktower Productions](#) is activating the next CriticalRun art format for urban mobil agora in New York. Place and time to be announced on the [Facebook page](#).

-- Nov 21, [OCEANS BREATHE SALTY](#) curated by

RU resident [Mette Woller](#) at the fitness center [Complete Body](#) in Midtown.

- Nov 23, screening of RU alum [Ana Bilankov's](#) experimental video *New Town Future Film* (2015) at [Pioneer Works Center for Art and Innovation](#).

- Nov 30, "The Impenetrability of Landscape," an artist talk by RU alum [Alice Miceli](#) at Americas Society.

With our residency season coming to an end, we are pleased to announce 2 exhibitions of work by current RU artists-in-residence at Peninsula Art Space and InCube Arts, as well as the performance *FLUID PHOSPHORESCENCE* at RU.

---

## RU PUBLIC PROGRAMS

### RU Exhibition: Pairing Down



Søren Aagaard, *Tabletop Dolly (still)*, 2014

November 6, 7-9pm

Peninsula Art Space, 352 Van Brunt Street

[Peninsula Art Space](#) and RU present a group exhibition with work by [Søren Aagaard](#), [Felipe Cohen](#), [Diana Policarpo](#), [Ariel Reichman](#). Curated by Marion Guiraud and Rachel Valinsky

*Pairing Down* features projects developed over the course of their residencies and elaborations on past works for the first time in New York.

[MORE INFO](#)

---

# RU Exhibition: Socially Acceptable



Anna Fabricius, *The Possible Plays with Thought*, 2015. Still image from video, courtesy of the Artist.

November 7, 6-8pm

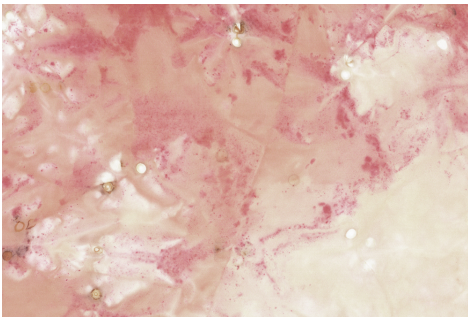
InCube Arts, 314 West 52nd Street

InCube Arts and RU are pleased to present *Socially Acceptable*, an exhibition curated by Juliana Driever that brings together the work of [Anna Fabricius](#), [David Helbich](#), and [Sophia Hewson](#). *Socially Acceptable* looks at relational artworks that grapple with the vagaries of human behavior.

[MORE INFO](#)

---

# RU Event: a Journey through confusion, tragedies and search for love-ing



Marie Edinger Plum, excerpt of "a Journey through confusion, tragedies and search for love-ing" (2015)

November 10, 4-6pm

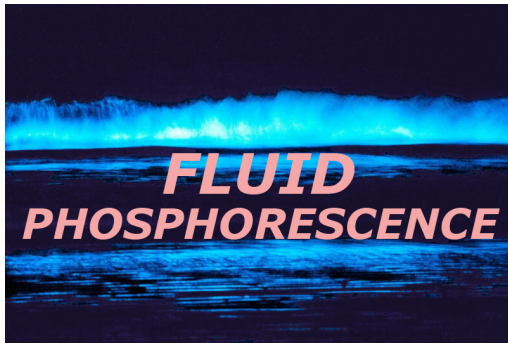
Residency Unlimited

[Marie Edinger Plum](#) presents her booklet *a Journey through confusion, tragedies and search for love-ing*, a compilation of poems. Each chapter represents the essence of an art piece, its conflict, beauty, potential and aspiration.

[MORE INFO](#)

---

# RU Exhibition: FLUID PHOSPHORESCENCE



November 18, 2015 - 6:30pm

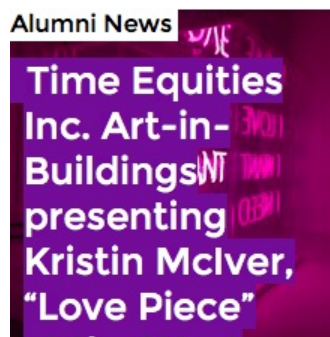
Residency Unlimited (RU)

Curated by [Mette Kjærgaard Præst](#), *FLUID PHOSPHORESCENCE* is a one evening exhibition. The evening will touch upon bodily enlightenment, sex magic, the function of the orgasm and its potential as a tool for collective consciousness and social change.

[MORE INFO](#)

---

## RU ALUMNI NEWS



And for Halloween...



Photo by Anna Fabricius

David Helbich transformed as the New Museum and Sophia Hewson as a witch.

## DIALOGUES

A critical forum examining a wide range of residency related topics.



---

[About](#) / [Residencies](#) / [Programs](#) / [RU Opportunities](#)

[Support RU](#) / [Contact Us](#)



© 2009 - 2015 Residency Unlimited | 360 Court Street unit #4, Brooklyn NY 11231

Web Version

Forward

Unsubscribe

Powered by **Mad Mimi**®  
A GoDaddy® company